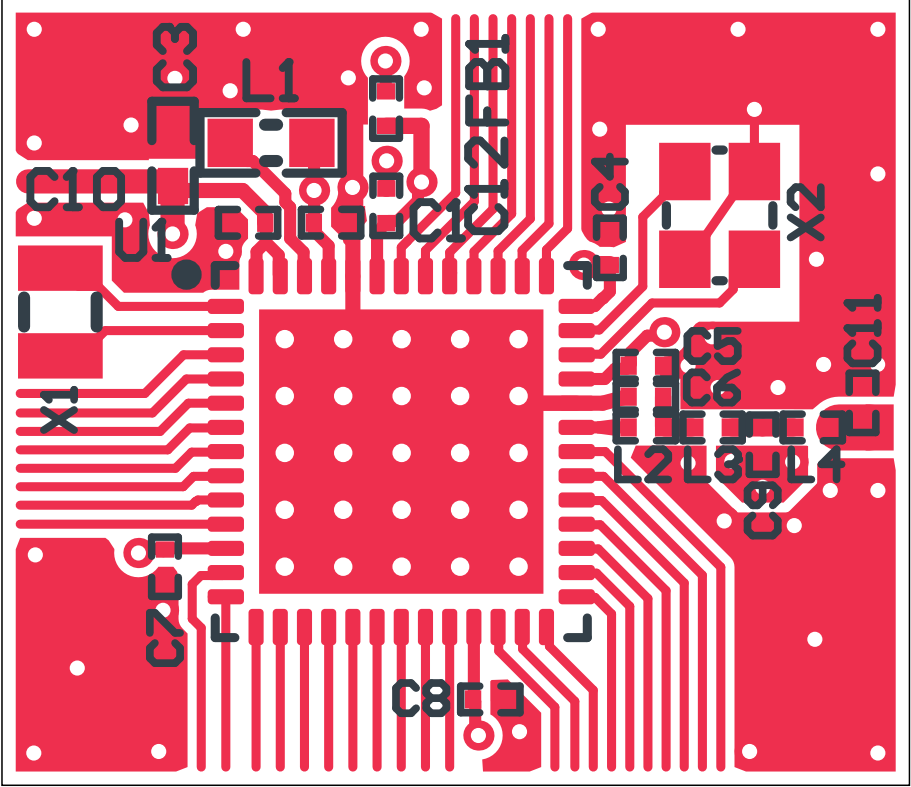


Top Layer (Scale 8:1)



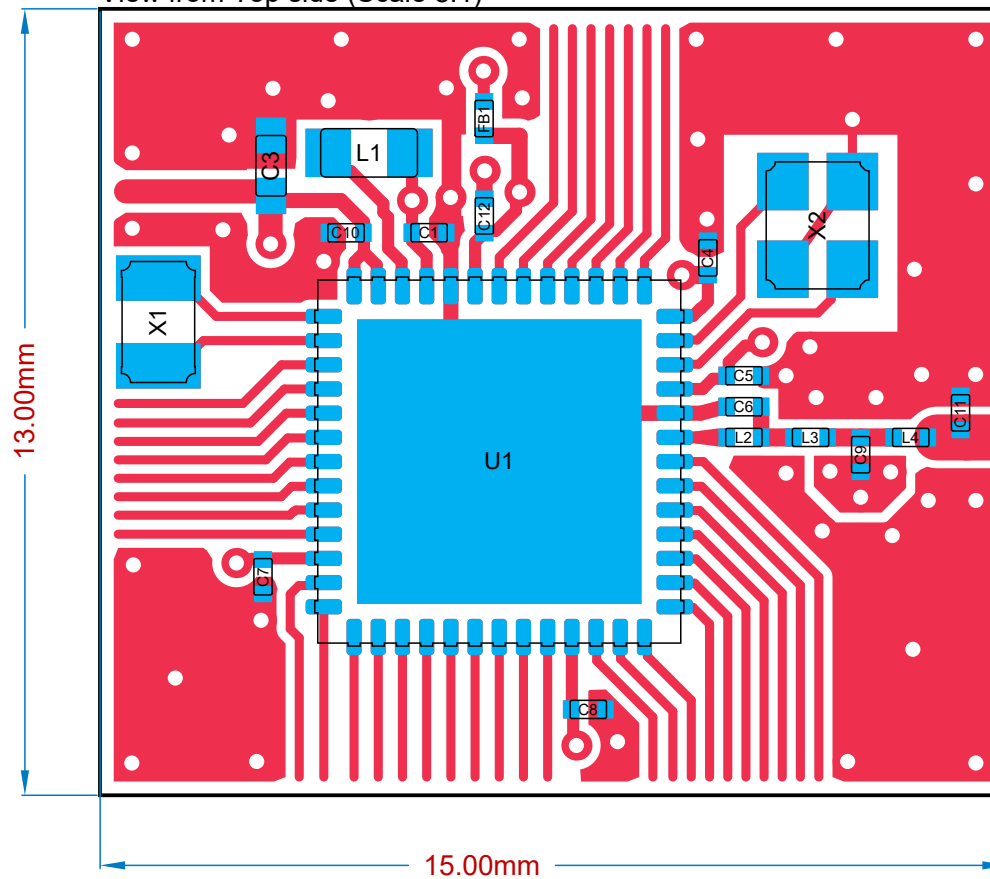
- NOTE:
- Grounding of C6 capacitor must ONLY be connected to Pin 35 (VSS_PA) in top layer.
 - Pin 35 must ONLY be connected to Pin 53 (VSS center pad) underneath the IC package
 - Grounding of C9 capacitor MUST be isolated from ALL ground layers except the bottom ground layer.
 - Prepreg thickness between TOP and Mid-Layer 1 shall be $\leq 100\text{ }\mu\text{m}$.

Nordic Semiconductor does not warrant the accuracy or completeness of this documentation or any included information. Nordic Semiconductor makes no assurances that this design will meet specification, be appropriate for your application, or fit for any particular purpose, or that it will function in an implementation. Nordic Semiconductor also does not claim that the design is ready for production. It is your responsibility to thoroughly validate and test your design implementation to confirm the functionality of your application.
© Nordic Semiconductor — All rights reserved.

Title			
VDD:nRF supplied by 1.8 V to 3.6 V, DC/DC Enabled			
Size:	A4	Config. No.:	1
		Device:	nRF54L15-QGAA
Date:	19.12.2025		Revision:
			1.0
File:	nRF54L15_qgaa_4l_config1.PCBDwf		Sheet
			1 of 9
Classification:	Public		Drawn By:
			STL1/DABA

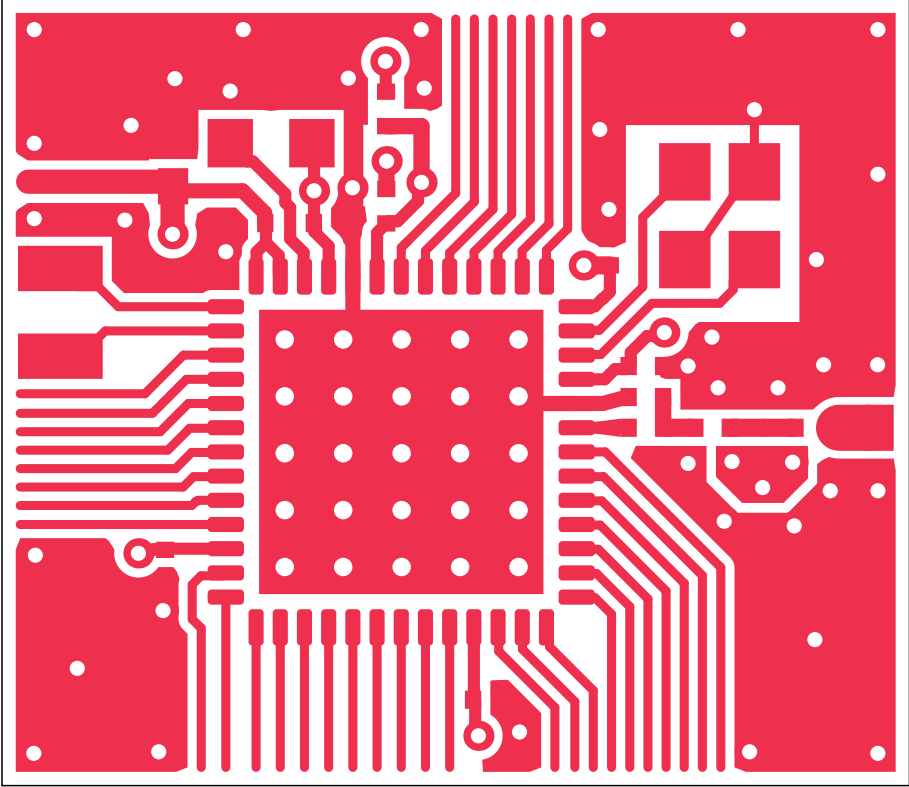


View from Top side (Scale 8:1)



Title			
VDD:nRF supplied by 1.8 V to 3.6 V, DC/DC Enabled			
Size: A4	Config. No.: 1	Device: nRF54L15-QGAA	Revision: 1.0
Date: 19.12.2025			Sheet 2 of 9
File: nRF54L15_qgaa_4L_config1.PCBDwf			Drawn By: STL1/DABA
Classification: Public			

Top Layer (Scale 8:1)



Title			
VDD:nRF supplied by 1.8 V to 3.6 V, DC/DC Enabled			
Size:	A4	Config. No.:	1
Date:	19.12.2025	Device:	nRF54L15-QGAA
File:	nRF54L15_qgaa_4L_config1.PCBWdf	Revision:	1.0
Classification:	Public	Sheet:	3 of 9
		Drawn By:	STL1/DABA



A

B

C

D

E

F

1

1

2

2

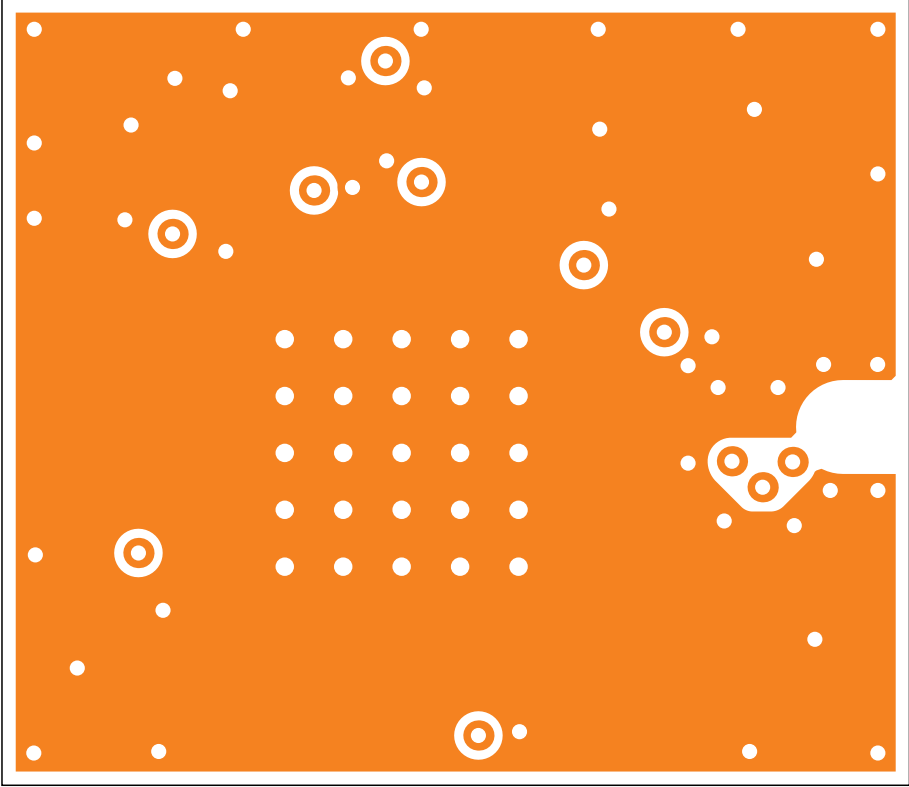
3


3

4

4

Mid-Layer 1 (Scale 8:1)



Title				
VDD:nRF supplied by 1.8 V to 3.6 V, DC/DC Enabled				
Size:	A4	Config. No.:	1	
Date:	19.12.2025	Device:	nRF54L15-QGAA	
File:	nRF54L15_qgaa_4L_config1.PCBDwf	Revision:	1.0	
Classification:	Public	Sheet	4 of 9	
		Drawn By:	STL1/DABA	

A

B

C

D

E

F

A

B

C

D

E

F

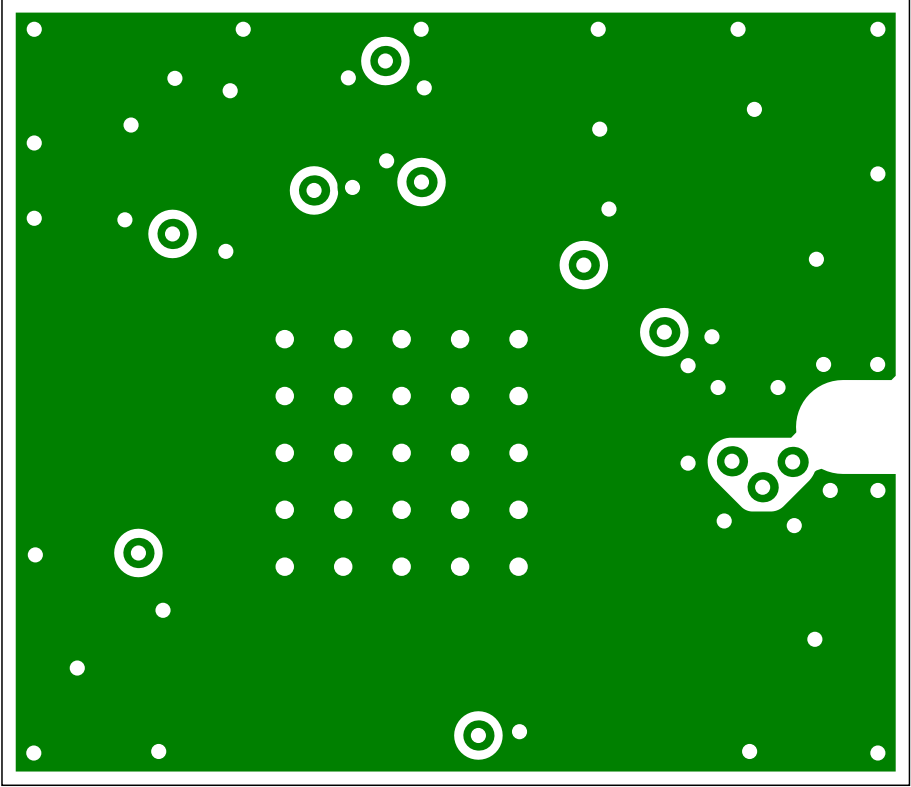
1

2

3

4

Mid-Layer 2 (Scale 8:1)



Title			
VDD:nRF supplied by 1.8 V to 3.6 V, DC/DC Enabled			
Size:	A4	Config. No.:	1
Date:	19.12.2025	Device:	nRF54L15-QGAA
File:	nRF54L15_qgaa_4L_config1.PCBDwf	Revision:	1.0
Classification:	Public	Sheet:	5 of 9
		Drawn By:	STL1/DABA



A

B

C

D

E

F

A

B

C

D

E

F

1

1

2

2

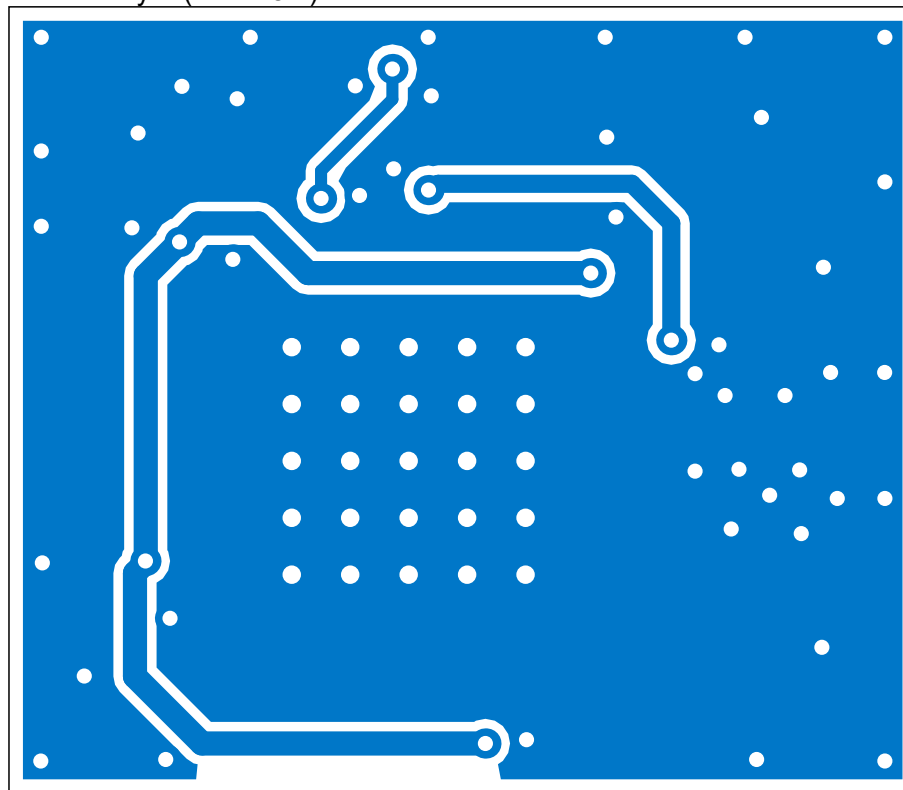
3

3

4

4

Bottom Layer (Scale 8:1)



Title			
VDD:nRF supplied by 1.8 V to 3.6 V, DC/DC Enabled			
Size:	A4	Config. No.:	1
Date:	19.12.2025	Device:	nRF54L15-QGAA
File:	nRF54L15_qgaa_4L_config1.PCBWdf	Revision:	1.0
Classification:	Public	Sheet	6 of 9
		Drawn By:	STL1/DABA



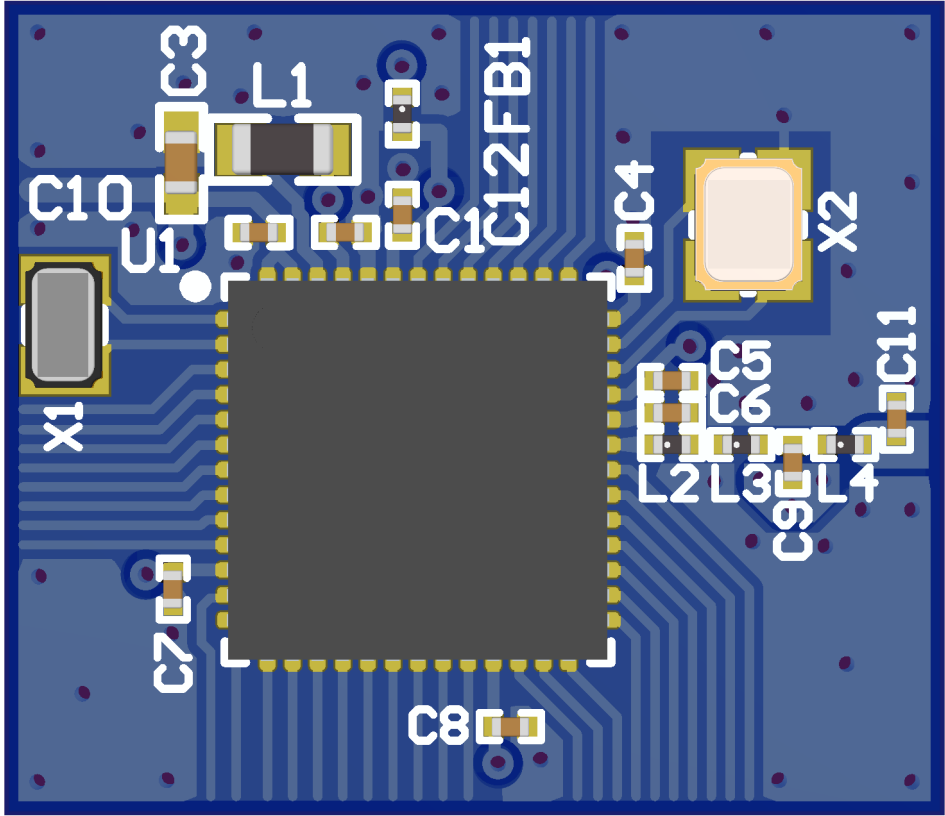
Layer Stack Legend

Material	Layer	Thickness	Type	Gerber
	Top Overlay		Legend	GTO
Surface Material	Top Solder	0.01mm	Solder Mask	GTS
Copper	Top Layer	0.04mm	Signal	GTL
Prepreg		0.10mm	Dielectric	
CF-004	Mid-Layer 1	0.04mm	Signal	G1
Core		1.20mm	Dielectric	
CF-004	Mid-Layer 2	0.04mm	Signal	G2
Prepreg		0.10mm	Dielectric	
Copper	Bottom Layer	0.04mm	Signal	GBL
Surface Material	Bottom Solder	0.01mm	Solder Mask	GBS
	Bottom Overlay		Legend	GBO
Total thickness: 1.56mm				

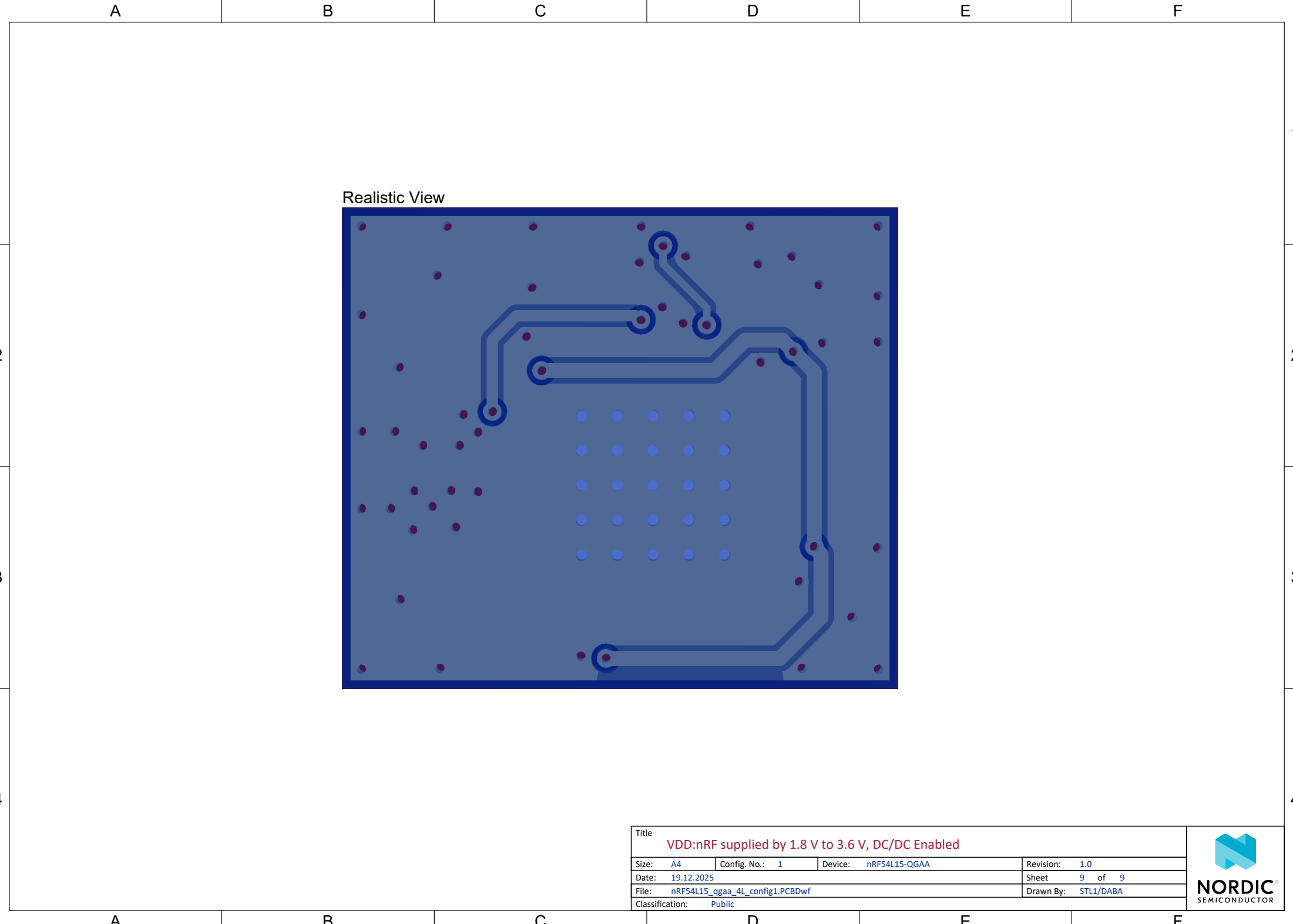
Title			
VDD:nRF supplied by 1.8 V to 3.6 V, DC/DC Enabled			
Size: A4	Config. No.: 1	Device: nRF54L15-QGAA	Revision: 1.0
Date: 19.12.2025			Sheet 7 of 9
File: nRF54L15_qgaa_4L_config1.PCBWdf			Drawn By: STL1/DABA
Classification: Public			



Realistic View



Title			
VDD:nRF supplied by 1.8 V to 3.6 V, DC/DC Enabled			
Size:	A4	Config. No.:	1
Date:	19.12.2025	Device:	nRF54L15-QGAA
File:	nRF54L15_qgaa_4L_config1.PCBDwf	Revision:	1.0
Classification:	Public	Sheet	8 of 9
		Drawn By:	STL1/DABA



Title			
VDD:nRF supplied by 1.8 V to 3.6 V, DC/DC Enabled			
Size: A4	Config. No.: 1	Device: nRF54L15-QGAA	Revision: 1.0
Date: 19.12.2025			Sheet 9 of 9
File: nRF54L15_qgaa_4L_config1.PCBDwf			Drawn By: STL1/DABA
Classification: Public			

